



# Funding Scheme

Strategic Relationship &  
Approach of Funding  
Opportunities  
2026-2029

What You Need To Know



# Agenda

**01** Strategic Themes of the Regional Youth Development 2026-2029

**02** Public Health Approach to Delivery and Funding

**03** Strategic Relationship of Funding Delivery

**04** Regional Strategic Funding Scope of Delivery & Assessment

**05** Regional Development Funding Scope of Delivery & Assessment

**06** Regional Project Funding Scope of Delivery & Assessment

**07** Conditions of Funding in the 2026-2029 Period

**08** Question & Answer



# Strategic Themes of the Regional Youth Development Plan

2026-2029 Context



# Regional Planning Strategic Themes



## Child and Young Person Centred

Through a rights-based approach the planning and delivery of youth services will be based on the needs identified by children and young people, including feedback to children and young people on how we used the information they have provided to inform our decisions



## Delivering Services Based on Need and through Partnership

The delivery of youth services will be based on the needs of children and young people through existing statutory youth provision and through grant aid assistance to the community and voluntary sector. This includes through partnership and collaboration when it improves the outcomes for children and young people.



## Evidence Informed

We will collect only what we need to inform the benefits and impact of youth work delivery in the lives of children and young people. We will engage in academic research to further provide evidence informed approaches to the impact, planning, and delivery of services with a focus on reducing bureaucracy and administration in the delivery of youth work.



## Empowering All our Staff

We will ensure all those delivering youth work have the curriculum resources and skills to meet the needs of our children and young people accessing youth services.



# Regional Youth Development Plan

## 26-29 Headline Goals



**Child and Young  
Person Centred**

**Implementation of a process that constantly and consistently seeks the views of children and young people to inform the planning and delivery of youth services on a quarterly basis**

**Based on the views of children and young people, review and update annual action plans quarterly, based on the changing assessed needs of children and young people**

**Based on available resources secure adequate, accessible universal youth provision for all children and young people to provide open access at the right time and in the right place**

**Based on available resources (Youth Service funding and other earmarked funding) provide early intervention and prevention programmes based on the assessed needs of children and young people**

**Develop and deliver, in partnership with other agencies and government departments, enhanced support for children and young people based on their assessed needs.**



**Delivering Services  
Based on Need and  
through Partnership**



# Regional Youth Development Plan

## 26-29 Headline Goals



### Evidence Informed

Implementation of a Benefits Realisation Framework for youth work with established indicators to reduce bureaucracy and administration linked to reporting on delivery


Implementation of a programme of academic research to evaluate and measure the impact of universal, early intervention/prevention and enhanced youth work support for children and young people



### Empowering All our Staff

Focus on developing the volunteer workforce in line with the Education Authority Youth Work Volunteer Strategy 2023-2029 to increase recruitment, improve retention and recognise and celebrate the role of volunteers

Implementation of a Youth Service Workforce Development Strategy that effectively provides curriculum resources and builds the capacity of workforce to meet the ongoing needs of our children and young people through universal, early intervention/prevention and enhanced support programmes



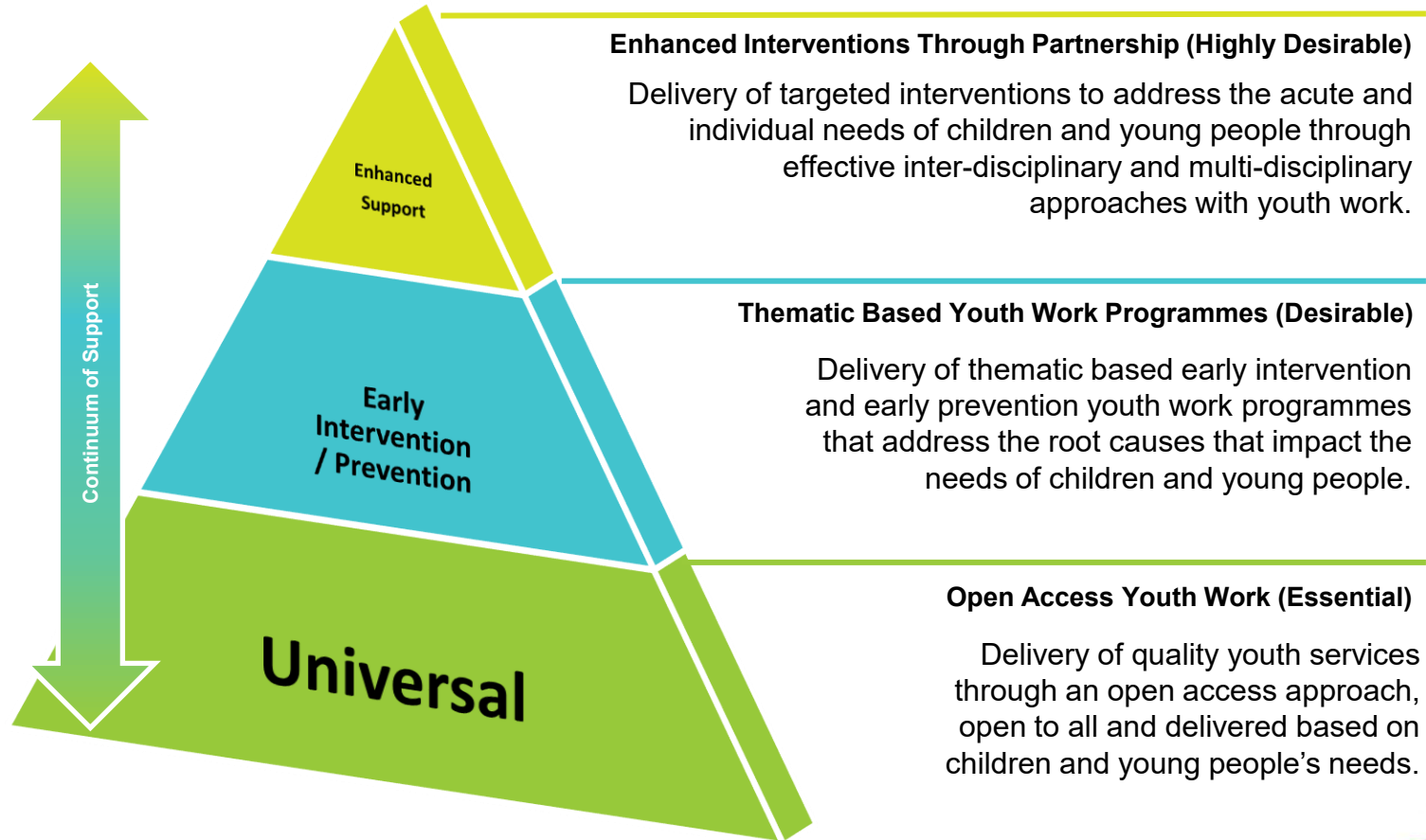


# Public Health Approach to Delivery & Funding

2026-2027



# Youth Service Public Health Approach



# Youth Service Public Health Model Stretch Goal

## STRETCH GOAL UNDERPINNED BY THE PUBLIC HEALTH MODEL

**Universal  
(Essential Goal)**

**Early Intervention & Prevention  
(Desirable Goal)**

**Enhanced Support  
(The Stretch Goal)**

### What is it?

Providing **open access youth provision** that provides **safe and welcoming space** for all our children and young people.

Providing ongoing **thematic based group work programmes and projects** to address the **root causes impacting the needs** of children and young people.

Providing **targeted interventions** to address the **acute needs** of children and young people **in partnership** with other agencies to meet the needs of children and young people.

### How will we do it?

- Providing adequate universal youth provision for children and young people, ensuring that statutory and voluntary youth services are funded to prioritise the needs of children and young people who access them
- Services are provided at the right times, in the right places based on what children and young people need
- Services are informed with the participation of children and young people
- Supporting children and young people who need early intervention/prevention to access programmes
- Services are equipped with the resources to deliver a quality open access youth work programme of offer
- Capacity of staff is supported to meet the needs of children and young people presented through universal provision

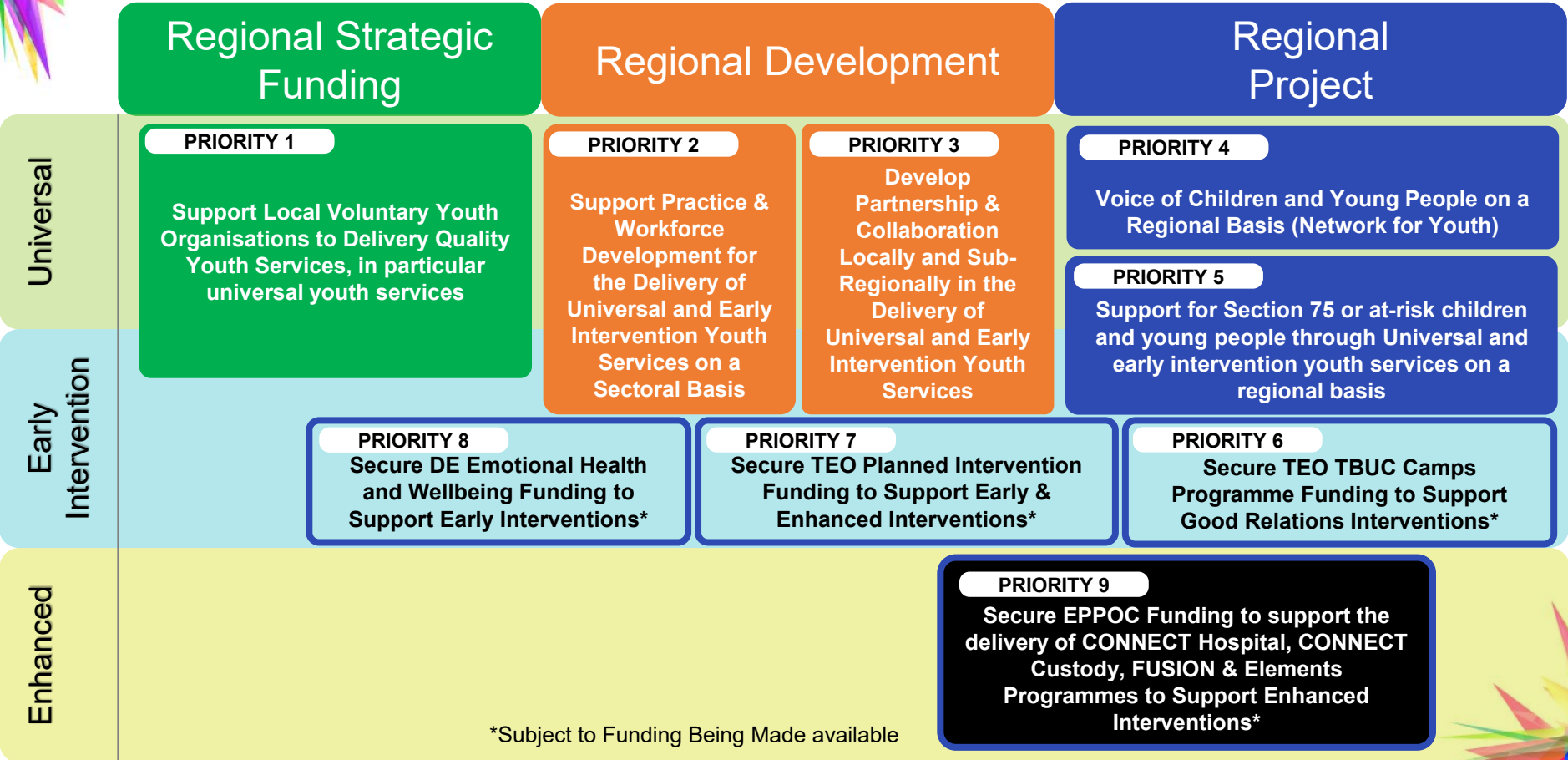
- Providing resources (curriculum, training and funding) to facilitate youth work programmes prioritised against assessed need through formal and informal settings
- Supporting families, formal education and communities to support the needs of the young person
- Services are informed with the participation of children and young people
- Supporting children and young people who need it to access enhanced support or engage in universal support
- Services are equipped with the resources to deliver a quality early intervention and prevention programmes/projects
- Capacity of staff is supported to meet the needs through the delivery of early intervention and prevention programmes/projects

- Providing resources (curriculum, training and funding) to facilitate enhanced professional development
- Working with partners and agencies to deliver bespoke support services at an individual and group level
- Supporting young people to attend specialist support services
- Reintegrating young people into appropriate youth work opportunities
- Reconnecting young people within their family, formal education and community
- Supporting children and young people to progress through early intervention and prevention programmes or connect with universal support

# Youth Service Public Health Model Stretch Goal

Universal	Early Intervention & Prevention	Enhanced Support
<b>How will we resource it?</b>		
<p>Focused use of the Department of Education Allocated Funding for Youth Work to the Education Authority</p>	<p>Mixed funding model approach using the Department of Education Funding for Youth Work and other Earmarked Funding aligned to the theme</p>	<p>Focused use of other earmarked funding supporting the delivery of youth work</p>
<b>The Benefits</b>		
<p><b>Children and Young People will have:</b></p> <ul style="list-style-type: none"> <li>Increased protective factors in their lives</li> <li>Increased sense of belonging</li> <li>Experience social and emotional skills development</li> <li>Increased agency to make informed decisions</li> <li>Improved social connectedness</li> <li>Increased sense of power to change the world around them</li> </ul>	<p><b>Children and Young People will have:</b></p> <ul style="list-style-type: none"> <li>Improved the resilience, skills and abilities to manage their own wellbeing</li> <li>Increased agency to make informed decisions</li> <li>Increased participation in, and focus on, their learning</li> <li>Improved emotional health and wellbeing</li> <li>Development of their thinking skills, life skills and work skills</li> </ul>	<p><b>Children and Young People will have:</b></p> <ul style="list-style-type: none"> <li>Complex needs of individual children and young people are met</li> <li>Increased connection between statutory, community and public services</li> <li>Enhanced youth service capacity to meet the complex needs of children and young people</li> <li>Facilitated de-escalation support pathways</li> </ul>
<b>Benefit Indicators</b>		
<ul style="list-style-type: none"> <li>Number of open access youth work sessions provided</li> <li>Number of children and young people participating in open access youth provision</li> <li>Percentage of young people satisfied with the service</li> <li>Number of young people volunteering within the programme</li> <li>Number of young people gaining accreditation</li> <li>Status of children and young people's participation on the Engagement Framework</li> <li>Number of training programmes provided</li> <li>Number of staff participating in training</li> </ul>	<ul style="list-style-type: none"> <li>Number of group work programmes delivered</li> <li>Number of children and young people participating in youth work programmes</li> <li>Percentage of young people satisfied with the programme</li> <li>Number of young people gaining accreditation</li> <li>Number of young people volunteering within the project</li> <li>Number of referrals to external or enhanced support services or universal services</li> <li>Number of training programmes provided</li> <li>Number of staff participating in training</li> <li>Number of children and young people progressing against one or more of the youth work outcomes</li> </ul>	<ul style="list-style-type: none"> <li>Number of children and young people engaged in enhanced support youth work programmes</li> <li>The numbers of children and young people referred to external agencies</li> <li>Number of referrals to early intervention or universal services</li> <li>Number of children and young people progressing against one or more of the youth work outcomes</li> <li>Number of training programmes provided</li> <li>Number of staff participating in training</li> </ul>

# Public Health Approach Prioritisation to Regional Funding



\*Subject to Funding Being Made available



# Strategic Relationship of Funding Delivery

Why fund the things we are funding



## REGIONAL STRATEGIC FUNDING

26-RS-001/2/3 Strategic Support to Community, Uniformed and Irish Medium Local Voluntary Youth Organisations

### Strategic Workforce Development Support

Youth Work Outcomes, Quality Assurance  
Safeguarding & Child Protection, Governance and designated members  
Workforce need

### Strategic Curriculum Support

Youth Work Outcomes, Quality Assurance  
Safeguarding & Child Protection, Governance and designated members  
curriculum need

### Representation & Collaboration

### Safeguarding & Child Protection

### Quality Assurance Support

### Youth Work Outcomes Support

### Governance Support

## REGIONAL DEVELOPMENT FUNDING

26-RD-001 Partnership, Collaboration and Youth Work Practice Development Sectoral Partnership

### Sectoral Workforce Development

Other area in addition to what is provided through  
Regional Strategic Funding

### Sectoral Curriculum Development

Other area in addition to what is provided through  
Regional Strategic Funding

### Partnership & Collaboration Support, Monitoring & Evaluation

## REGIONAL DEVELOPMENT FUNDING

26-RD-002 Pilot Partnership and Collaboration in Youth Work Practice on a Local Planning Area and Locality Basis

### Local Youth Voice Partnership to Inform Planning

### Partnership & Collaboration in the Delivery of Universal Youth Services

### Partnership & Collaboration in the Delivery of Early Intervention Youth Services

## REGIONAL PROJECT FUNDING

26-RP-001/2/3/4 Support for Section 75 Groups of Children and Young People and Youth Voice on a Regional Basis

### Support for Workforce Development

Advice and Support to Sectoral Workforce Development for  
Section 75 Groups in the delivery of Universal Youth Services

### Support for Curriculum Development

Advice and Support to Sectoral Curriculum Development for  
Section 75 Groups in the delivery of Universal Youth Services

### Regional Youth Voice Project Partnership (Network for Youth)

### Direct Delivery of Universal and Early Intervention

Youth Services Bespoke to the Needs of Section 75 Groups

**Beneficiary Group:**  
Statutory & Voluntary Youth Organisation/Units,  
Youth Work Staff and Youth Work Volunteers

**Beneficiary Group:** Children and Young People through Quality Universal Youth Provision and Early Intervention on a Regional Basis

### Strategic Key:



Child and Young  
Person Centred



Delivering Services  
Based on Need and  
Through  
Partnership



Empowering All  
Our Staff

## REGIONAL STRATEGIC FUNDING

26-RS-001/2/3 Strategic Support to Community, Uniformed and Irish Medium Local Voluntary Youth Organisations

### Strategic Workforce Development Support

Youth Work Outcomes, Quality Assurance  
Safeguarding & Child Protection, Governance and designated members curriculum need

### Strategic Curriculum Support

Youth Work Outcomes, Quality Assurance  
Safeguarding & Child Protection, Governance and designated members curriculum need

### Representation & Collaboration

### Safeguarding & Child Protection

### Quality Assurance Support

### Youth Work Outcomes Support

### Governance Support

### Beneficiary Group:

Statutory & Voluntary Youth Organisation/Units,  
Youth Work Staff and Youth Work Volunteers

## REGIONAL DEVELOPMENT FUNDING

26-RD-001 Partnership, Collaboration and Youth Work Practice Development Sectoral Partnership

### Sectoral Workforce Development

Other area in addition to what is provided through Regional Strategic Funding

### Sectoral Curriculum Development

Other area in addition to what is provided through Regional Strategic Funding

### Partnership & Collaboration Support, Monitoring & Evaluation

### REGIONAL DEVELOPMENT FUNDING

26-RD-002 Pilot Partnership and Collaboration in Youth Work Practice on a Local Planning Area and Locality Basis

### Local Youth Voice Partnership to Inform Planning

### Partnership & Collaboration in the Delivery of Universal Youth Services

### Partnership & Collaboration in the Delivery of Early Intervention Youth Services

## REGIONAL PROJECT FUNDING

26-RP-001/2/3/4 Support for Section 75 Groups of Children and Young People and Youth Voice on a Regional Basis

### Support for Workforce Development

Advice and Support to Sectoral Workforce Development for Section 75 Groups in the delivery of Universal Youth Services

### Support for Curriculum Development

Advice and Support to Sectoral Curriculum Development for Section 75 Groups in the delivery of Universal Youth Services

### Regional Youth Voice Project Partnership (Network for Youth)

### Direct Delivery of Universal and Early Intervention

Youth Services Bespoke to the Needs of Section 75 Groups

### Strategic Key:



Child and Young Person Centred



Delivering Services Based on Need and Through Partnership



Empowering All Our Staff

**Beneficiary Group:** Children and Young People through Quality Universal Youth Provision and Early Intervention on a Regional Basis

## REGIONAL STRATEGIC FUNDING

26-RS-001/2/3 Strategic Support to Community, Uniformed and Irish Medium Local Voluntary Youth Organisations

### Strategic Workforce Development Support

Youth Work Outcomes, Quality Assurance  
Safeguarding & Child Protection, Governance and designated members curriculum need

### Strategic Curriculum Support

Youth Work Outcomes, Quality Assurance  
Safeguarding & Child Protection, Governance and designated members curriculum need

### Representation & Collaboration

### Safeguarding & Child Protection

### Quality Assurance Support

### Youth Work Outcomes Support

### Governance Support

### Beneficiary Group:

Statutory & Voluntary Youth Organisation/Units,  
Youth Work Staff and Youth Work Volunteers

## REGIONAL DEVELOPMENT FUNDING

26-RD-001 Partnership, Collaboration and Youth Work Practice Development Sectoral Partnership

### Sectoral Workforce Development

Other area in addition to what is provided through Regional Strategic Funding

### Sectoral Curriculum Development

Other area in addition to what is provided through Regional Strategic Funding

### Partnership & Collaboration Support, Monitoring & Evaluation

## REGIONAL DEVELOPMENT FUNDING

26-RD-002 Pilot Partnership and Collaboration in Youth Work Practice on a Local Planning Area and Locality Basis

### Local Youth Voice Partnership to Inform Planning

### Partnership & Collaboration in the Delivery of Universal Youth Services

### Partnership & Collaboration in the Delivery of Early Intervention Youth Services

## REGIONAL PROJECT FUNDING

26-RP-001/2/3/4 Support for Section 75 Groups of Children and Young People and Youth Voice on a Regional Basis

### Support for Workforce Development

Advice and Support to Sectoral Workforce Development for Section 75 Groups in the delivery of Universal Youth Services

### Support for Curriculum Development


Advice and Support to Sectoral Curriculum Development for Section 75 Groups in the delivery of Universal Youth Services

### Regional Youth Voice Project Partnership (Network for Youth)

### Direct Delivery of Universal and Early Intervention

Youth Services Bespoke to the Needs of Section 75 Groups

### Strategic Key:

 **Child and Young Person Centred**

 **Delivering Services Based on Need and Through Partnership**

 **Empowering All Our Staff**

**Beneficiary Group:** Children and Young People through Quality Universal Youth Provision and Early Intervention on a Regional Basis

## REGIONAL STRATEGIC FUNDING

26-RS-001/2/3 Strategic Support to Community, Uniformed and Irish Medium Local Voluntary Youth Organisations

### Strategic Workforce Development Support

Youth Work Outcomes, Quality Assurance  
Safeguarding & Child Protection, Governance and designated members curriculum need

### Strategic Curriculum Support

Youth Work Outcomes, Quality Assurance  
Safeguarding & Child Protection, Governance and designated members curriculum need

### Representation & Collaboration

### Safeguarding & Child Protection

### Quality Assurance Support

### Youth Work Outcomes Support

### Governance Support

### Beneficiary Group:

Statutory & Voluntary Youth Organisation/Units,  
Youth Work Staff and Youth Work Volunteers

## REGIONAL DEVELOPMENT FUNDING

26-RD-001 Partnership, Collaboration and Youth Work Practice Development Sectoral Partnership

### Sectoral Workforce Development

Other area in addition to what is provided through Regional Strategic Funding

### Sectoral Curriculum Development

Other area in addition to what is provided through Regional Strategic Funding

### Partnership & Collaboration Support, Monitoring & Evaluation

### REGIONAL DEVELOPMENT FUNDING

26-RD-002 Pilot Partnership and Collaboration in Youth Work Practice on a Local Planning Area and Locality Basis

### Local Youth Voice Partnership to Inform Planning

### Partnership & Collaboration in the Delivery of Universal Youth Services

### Partnership & Collaboration in the Delivery of Early Intervention Youth Services

## REGIONAL PROJECT FUNDING

26-RP-001/2/3/4 Support for Section 75 Groups of Children and Young People and Youth Voice on a Regional Basis

### Support for Workforce Development

Advice and Support to Sectoral Workforce Development for Section 75 Groups in the delivery of Universal Youth Services

### Support for Curriculum Development

Advice and Support to Sectoral Curriculum Development for Section 75 Groups in the delivery of Universal Youth Services

### Regional Youth Voice Project Partnership (Network for Youth)

### Direct Delivery of Universal and Early Intervention

Youth Services Bespoke to the Needs of Section 75 Groups

### Strategic Key:



Child and Young Person Centred



Delivering Services Based on Need and Through Partnership



Empowering All Our Staff

**Beneficiary Group:** Children and Young People through Quality Universal Youth Provision and Early Intervention on a Regional Basis



# Regional Strategic Funding

Scope of Delivery, Essential Criteria and Assessment Criteria



# Regional Strategic Funding Assessment Criteria

All applicants should read and consider their responses before completing. This is the only information that will be provided to panel members to assess your application

To achieve the noted mark applicants must provide evidence against each of the points noted in each category. You will note that this must be in the last three years so provide dates. There is a distinct difference between providing directly to members versus signposting and guidance in the assessment scale.

It is important to note that the assessment criteria requires at least all points under meet requirements to be answered

Mark	DESCRIPTION	SCORE
Excellent	<b>Response provides Evidence of experience of:</b> <ul style="list-style-type: none"><li>Established mechanisms through digital and hard copies of providing clear and concise communication on good governance, funding opportunities and changes in policy that impacts practice</li><li>Supporting organisations to access funding from the EA Youth Service and other funding external of EA Youth Service. For example but not limited to annual applications for Generic Non-Targeted funding, TBUC Camps Programme, Planned Intervention Programme or Local Project, Local Area based and Lottery Funding etc when made available</li><li>Providing direct support to designated local voluntary youth organisations to have and maintain good governance to operate as a local voluntary youth organisation.</li><li>Providing membership services based on the needs identified by your designated local voluntary youth organisations, within the scope of youth policy and the youth work curriculum</li><li>Providing funding reporting on time and accurately to the Education Authority for previous funding your organisation has been in receipt of</li></ul>	100
Good	<b>Response provides Evidence of:</b> <ul style="list-style-type: none"><li>Examples of providing clear and concise communication on opportunities and changes in policy that impacts practice</li><li>Supporting organisations to access funding from the EA Youth Service. For example Generic Non-Targeted funding annually or Local Project and Local Area based when made available</li><li>Provide guidance and signposting to other support services to ensure that the designated local voluntary youth organisations have and maintain good governance to operate as a local voluntary youth organisation.</li><li>Providing membership services based on the needs identified by your designated local voluntary youth organisations, within the scope of youth policy and the youth work curriculum</li><li>Providing funding reporting on time and accurately to the Education Authority for previous funding your organisation has been in receipt of</li></ul>	50
Meets Requirements	<b>Response provides Evidence of:</b> <ul style="list-style-type: none"><li>Examples of communication to designated youth organisations</li><li>Providing signposting to other support services to ensure that the designated local voluntary youth organisations have and maintain good governance to operate as a local voluntary youth organisation.</li><li>Providing membership services based on the needs identified by your designated local voluntary youth organisations</li><li>Provide funding reporting on time to the Education Authority for previous funding your organisation has been in receipt of</li></ul>	25
Failed to Address	The applicant organisation does not provide enough evidence to demonstrate the have a proven track record in one or more of the areas within the assessment criteria of "meets requirements" in this area of support.	0

*Applicants Require a minimum of 25 marks for their application to be considered*

# Regional Strategic Funding Assessment Areas and Weighting

Criterion	Weighting	Available Marks	Minimum Marks Required	Number of Words
Proven Successful Track Record of Governance Support	10%	100	25	500
Proven Successful Track Record of Youth Work Curriculum Support	20%	200	50	500
Proven Successful Track Record of Workforce Development Support	20%	200	50	500
Proven Successful Track Record of Safeguarding & Child Protection Support	20%	200	50	500
Proven Successful Track Record of Reporting on Youth Work Outcomes Support	10%	100	25	500
Proven Successful Track Record of Representation & Collaboration Support	10%	100	25	500
Proven Successful Track Record of Quality Assurance Support	10%	100	25	500
<b>Total</b>	<b>100%</b>	<b>1000</b>		



# Regional Development Funding

Scope of Delivery, Essential Criteria and Assessment Criteria



# Regional Development Funding Assessment Criteria

All applicants should read and consider their responses before completing. This is the only information that will be provided to panel members to assess your application

To achieve the noted mark applicants must provide evidence against each of the points noted in each category. There is a distinct difference between providing directly versus providing guidance and support, and evidence of partnership working with other organisations

It is important to note that the assessment criteria requires at least all points under meet requirements to be answered

ea Education Authority Regional Development Funding Application Assessment Criteria		
EA Strategic Theme: Child and young person centred		
Outline how you assess the need, including effective stakeholder engagement, to plan, deliver and evaluate Youth Work delivery (750 Words)		
Mark	DESCRIPTION	SCORE
Excellent	<b>Response includes:</b> <ul style="list-style-type: none"><li>Provides detailed evidence of the organisation's own assessment of need with children and young people</li><li>Clearly articulates key stakeholders engaged and provides evidence of effective ongoing consultation to inform effective planning, practice, and evaluation.</li><li>Evidences a strong understanding of the assessed needs of youth service delivery within the <u>area of the funding opportunity</u>.</li><li>References the Areas of Enquiry within the Education Authority Regional Assessment of Need and/or strategies and clearly evidences how this influences planning of essential services to meet key targets.</li><li>Provides evidence of programmes or initiatives that have been designed to meet the assessed needs of youth service delivery.</li><li>Response provides evidence that the organisation provides feedback to those engaged.</li></ul>	200
Good	<b>Response includes:</b> <ul style="list-style-type: none"><li>Evidences an Assessment of Need is carried out within the service area which informs planning and service delivery.</li><li>References the Education Authority Regional Assessment of Need and/or key Strategies <u>relevant to the funding area</u>.</li><li>Clearly articulates key stakeholders engaged and provides evidence of regular engagement to inform Youth Work delivery.</li><li>Demonstrates how stakeholders influence planning and evaluation of service delivery.</li><li>Provides evidence of programmes that reflect elements of assessed need.</li></ul>	100
Meets Requirements	<b>Response includes:</b> <ul style="list-style-type: none"><li>Provides evidence of stakeholder engagement with key stakeholders.</li><li>References the Education Authority Regional Assessment of Need.</li><li>Provides some evidence of how these processes inform Youth Work delivery.</li></ul>	50
Failed to Address	The applicant organisation does not provide enough evidence to demonstrate the have a proven track record in one or more of the areas within the assessment criteria of "meets requirements" in this area of support.	0

Applicants Require a minimum of 50 marks for their application to be considered.

# Regional Development Funding Assessment Areas and Weighting

Criterion	Weighting	Available Marks	Minimum Marks Required	Number of Words
<b>EA Strategic Theme: Child and young person centred</b>	20%	200	50	750
<b>EA Strategic Theme: Delivering services based on need and through partnership</b>	30%	300	100	750
<b>EA Strategic Theme: Evidence informed</b>	40%	400	150	750
<b>Budget (see cost scoring methodology)</b>	10%	100	N/A	N/A
<b>Total</b>	100%	1000		



# Regional Project Funding

Scope of Delivery, Essential Criteria and Assessment Criteria



# Regional Strategic Funding Assessment Criteria

All applicants should read and consider their responses before completing. This is the only information that will be provided to panel members to assess your application

To achieve the noted mark applicants must provide evidence against each of the points noted in each category. There is a distinct difference between providing directly versus providing guidance and support, and evidence of partnership working with other organisations

It is important to note that the assessment criteria requires at least all points under meet requirements to be answered

Mark	DESCRIPTION	SCORE
Excellent	<b>Response includes:</b> <ul style="list-style-type: none"><li>Provides detailed evidence of the organisation's own assessment of need with children and young people</li><li>Clearly articulates key stakeholders engaged and provides evidence of effective ongoing consultation to inform effective planning, practice, and evaluation.</li><li>Evidences a strong understanding of the assessed needs of youth service delivery within the area of the funding opportunity.</li><li>References the Areas of Enquiry within the Education Authority Regional Assessment of Need and/or strategies and clearly evidences how this influences planning of essential services to meet key targets.</li><li>Provides evidence of programmes or initiatives that have been designed to meet the assessed needs of youth service delivery.</li><li>Response provides evidence that the organisation provides feedback to those engaged.</li></ul>	200
Good	<b>Response includes:</b> <ul style="list-style-type: none"><li>Evidences an Assessment of Need is carried out within the service area which informs planning and service delivery.</li><li>References the Education Authority Regional Assessment of Need and/or key Strategies relevant to the funding area.</li><li>Clearly articulates key stakeholders engaged and provides evidence of regular engagement to inform Youth Work delivery.</li><li>Demonstrates how stakeholders influence planning and evaluation of service delivery.</li><li>Provides evidence of programmes that reflect elements of assessed need.</li></ul>	100
Meets Requirements	<b>Response includes:</b> <ul style="list-style-type: none"><li>Provides evidence of stakeholder engagement with key stakeholders.</li><li>References the Education Authority Regional Assessment of Need.</li><li>Provides some evidence of how these processes inform Youth Work delivery.</li></ul>	50
Failed to Address	The applicant organisation does not provide enough evidence to demonstrate they have a proven track record in one or more of the areas within the assessment criteria of "meets requirements" in this area of support.	0

Applicants Require a minimum of 50 marks for their application to be considered.

# Regional Project Funding Assessment Areas and Weighting

Criterion	Weighting	Available Marks	Minimum Marks Required	Number of Words
<b>EA Strategic Theme: Child and young person centred</b>	20%	200	50	750
<b>EA Strategic Theme: Delivering services based on need and through partnership</b>	30%	300	100	750
<b>EA Strategic Theme: Evidence informed</b>	40%	400	150	750
<b>Budget (see cost scoring methodology)</b>	10%	100	N/A	N/A
<b>Total</b>	100%	1000		



# Conditions of Funding

For 2026-2029





## All 2026-2029 Funding is Subject to:

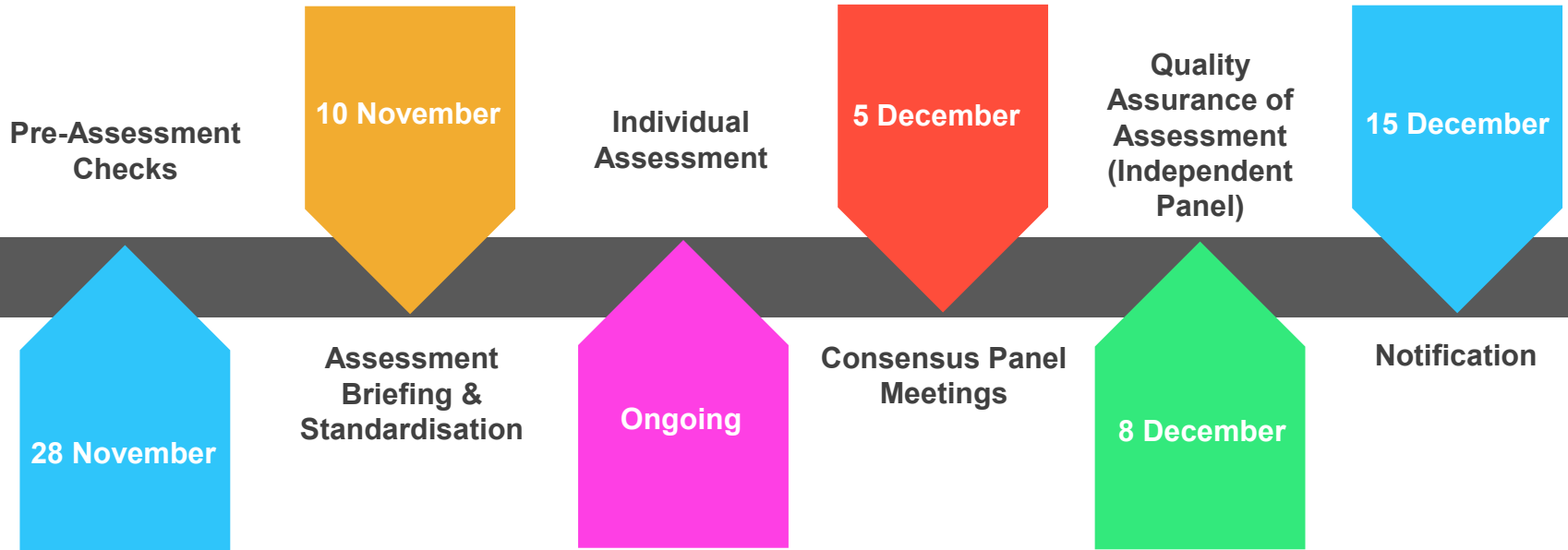
**Subject to the level of budget the Education Authority receives from the Department of Education for the 2026-2027 period and subsequent years**

**Any impacts as a result of the Department of Education's Review of Youth Work Policy**

**The outworkings of delivery linked to partnership and collaboration**

**The outcome of the task and finish group on SEND**

# Assessment Process





# Question & Answer

